



“Within an hour of deploying it we found about \$100,000 worth of savings year over year.”

PRODUCT BRIEF: AZURE EDITION

Take control of Azure performance and cost

Struggling to keep on top of your Azure applications and what they are costing? Our dashboards give you all the visibility you need.



Azure compute may be flexible, but your budget isn't

The Cloud is powerful at maintaining agility and flexibility, but costs can get out of control as services spin up to meet demand.

With our native dashboards for Azure cost, you can identify exactly which resources your application is using and track their costs in real time.

"We immediately identified VMs that were costing us money but not being used. We shaved our monthly Azure spend by \$5k already, so you could say we're getting a good ROI."

Stephen Vaughan at GAF

Optimize your application's use of your cloud resources before the bill arrives.

Optimize Performance

Bring together data from all of your tools to help your teams quickly identify the root causes of complex performance issues.

Reduce Downtime

Create application dashboards for support teams to immediately spot issues and take action.

Get up and running in five minutes

Install SquaredUp and build insightful dashboards in just minutes.

Use the customizable, out-of-the-box templates or create your own from scratch with the intuitive dashboard designer.

No new databases, Windows Services, or agents needed.

Loved by customers

93%

renewal rate

98%

customer support satisfaction

Industry leading

79 NPS

(last three months)

Trusted by leading global enterprises



Trusted by Microsoft

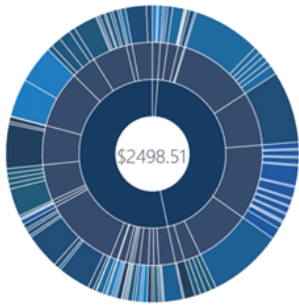
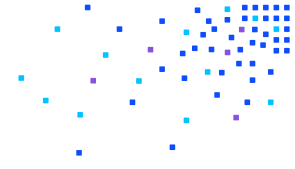
Microsoft has been a customer since 2013

Backed by the Community

2000

experts on Community Answers and collaborations with Microsoft MVPs

Key features



\$204.43	savhdoutput
\$195.17	sandbox-logs
\$187.44	sandbox_s2s-vmg
\$120.88	nwsqsp
\$103.84	johnstestplan

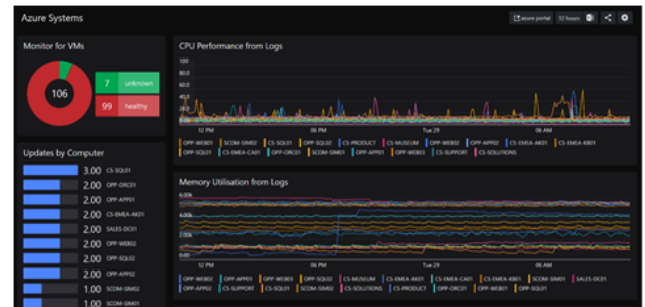
Azure cost monitoring

Unearth big hidden costs and identify your least utilized resources using interactive Treemap and Sunburst visualizations.

Drill down to see cost alongside performance and utilization to enable accurate right-sizing.

Azure Monitor integration

Integrating with **Azure Monitor Log Analytics** and **Application Insights**, SquaredUp Azure Edition makes it easy to leverage all the data streaming into your Azure Monitor workspaces.



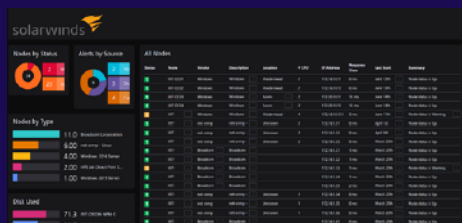
Umbrella Group	Global	Intouch	Hub
1183	26	1084	210
804	27	3	71
340	21	3	64
188	21	3	18
78	19	31	31
73	18	3	43
34	15	3	20
47	13	2	20
30	12	1	18
30	8	1	17

10770.98 GBP	6136.61 GBP	34.54 GBP	4587.73 GBP
--------------	-------------	-----------	-------------

Azure Lighthouse support

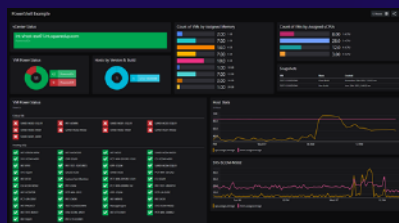
Azure Lighthouse is integral to cross tenant management in Azure. Fully compatible with Lighthouse, SquaredUp Azure Edition makes the creation of multi-tenanted dashboards quick and effortless.

Connect to data stored anywhere



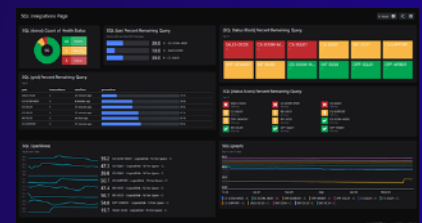
Integrate with REST APIs

Visualize data from sources like Pingdom, New Relic, Octopus Deploy, and countless others.



Any data with PowerShell

Our PowerShell tile lets you access any data with a little PowerShell scripting knowledge



All SQL data sources

Our SQL tile lets you connect to all your SQL data sources like the Microsoft System Center Suite and SolarWinds

