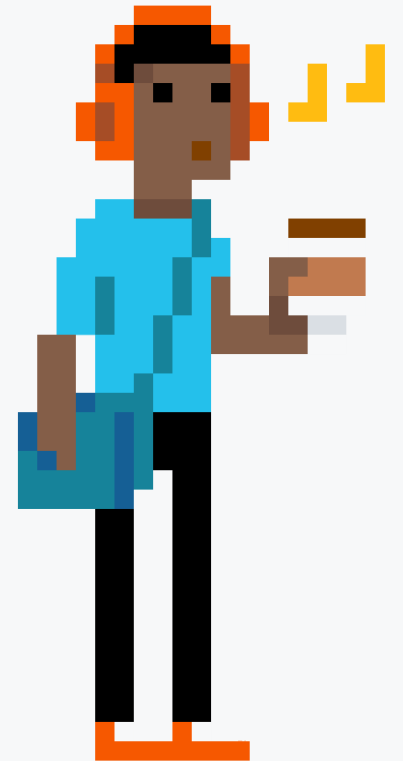


# While you wait...

Why not let us know what topics you'd like us to cover next?

Take the short survey at:

[squaredup.com/topics](https://squaredup.com/topics)

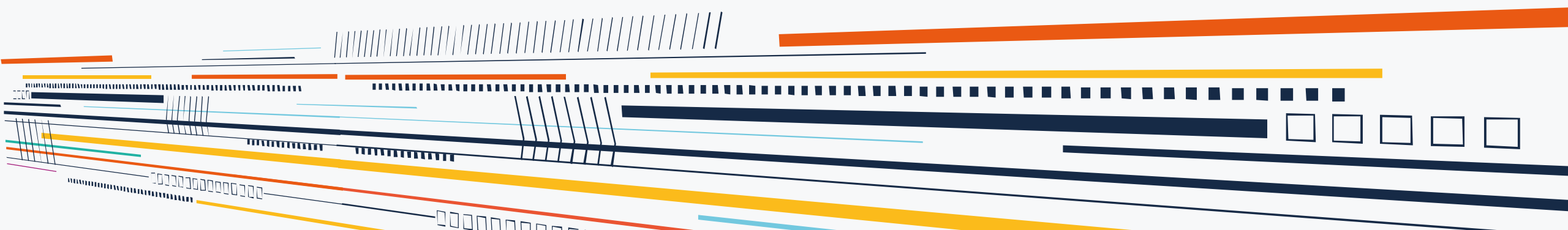




# SquaredUp

Coffee Break Webinar Series

## SCOM Asset tagging

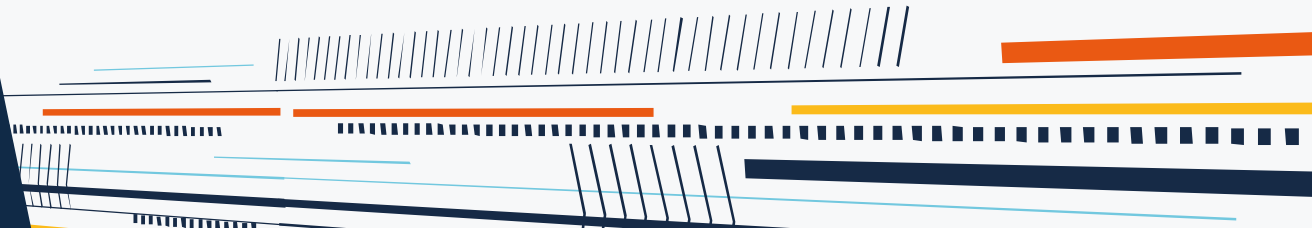


# Topic

## Extending the SCOM CMDB with asset information for computers

### Discussion points:

- Asset discovery via the Registry
- Automatic grouping
- Perspectives in Squared Up



# Asset tagging in SCOM

Management of IT is rarely based purely on technology, so the SCOM CMDB can be extended to include business information useful for Monitoring

- Application served
- Function / Tier
- Group/owner
- Service Level Agreement
- Location
- Patching tier



# Example solution

Our STS team have created an MP internally to group and classify resources based on registry keys

- Extended Windows Computer with new properties
- Discovery populates these values via known registry keys
- Tasks are available to add/update these values
- Groups are configured to dynamically update members based on those properties

Monitoring / Overrides / Notifications / Dashboards can then be scoped using those groups

# DEMO

Update computers with asset information via SCOM task

A sample MP used in this session is available online:

<http://www.github.com/squaredup/scripts>

```
download_installer"
log "====> This node is using channel #[node["squared_up_channel"]]
log "====> This node is using the package #[node["squared_up_package"]]
directory "c:/squared_up_temp" do
  action :create
end

Chef::Recipe.send(:include, Windows::Helper)
are_is_a_build_installed = is_package_installed?("#{node["squared_up_package"]}")

lock do
  _block "check-current-build-time" do
    node.run_state["install_new_build"] = true
    node.run_state["ftp_file_time"] = File.ctime("c:/squared_up/build_time.txt")
  end
end

Chef::Log.info("Last modification time: #{node.run_state["ftp_file_time"]}")

if node.attribute?('squared_up_build_last_mod_time')
  node.normal['squared_up_build_last_mod_time'] = node.run_state["install_new_build"] = true
else
  node.run_state["install_new_build"] = true
end

"Installing new build" = "#{node.run_state["install_new_build"]}"
```

# Custom perspectives

We can now create dashboards/perspectives in Squared Up based on these groups

- Dashboards containing only relevant content:
  - Application dashboards
  - Team dashboards
  - SLA dashboards

## Perspectives

- Visible only for a specific App or Team
- Function / Tier specific (e.g. Database, Web)
- Location based (local network status)

Check out the Coffee Break playlist for past webinars on perspectives



# Coffee Break: Resources

Let us know what you'd like us to cover:

[squaredup.com/topics](https://squaredup.com/topics)

See what's coming up next:

[squaredup.com/coffee-break-series](https://squaredup.com/coffee-break-series)

Recordings and slides published via

[squaredup.com/blog](https://squaredup.com/blog)

YouTube playlist for series

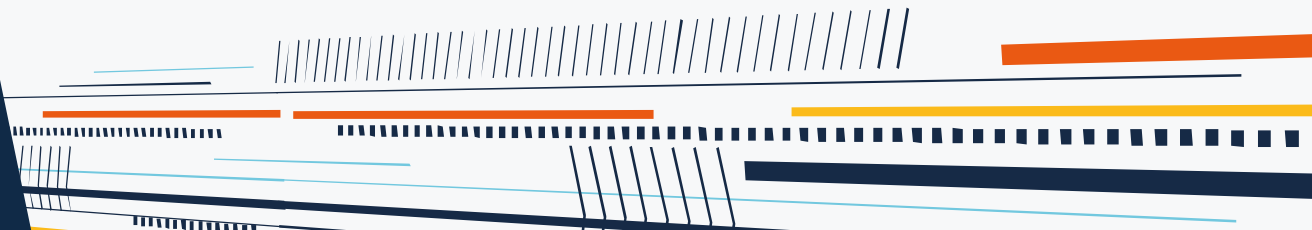
<https://www.youtube.com/playlist?list=PLJNXoiGgmTEu3yZRGpPNWQbG9WMyihZFs>

Follow up email, inc. resources,  
sent out after each webinar





# Q&A





SquaredUp

