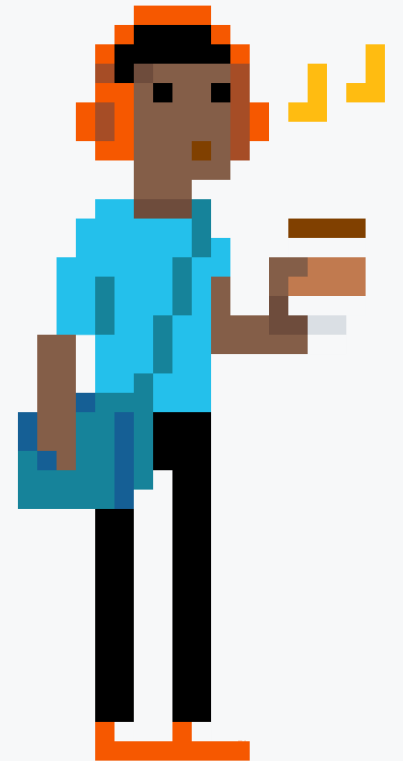


# While you wait...

Why not let us know what topics you'd like us to cover next?

Take the short survey at:

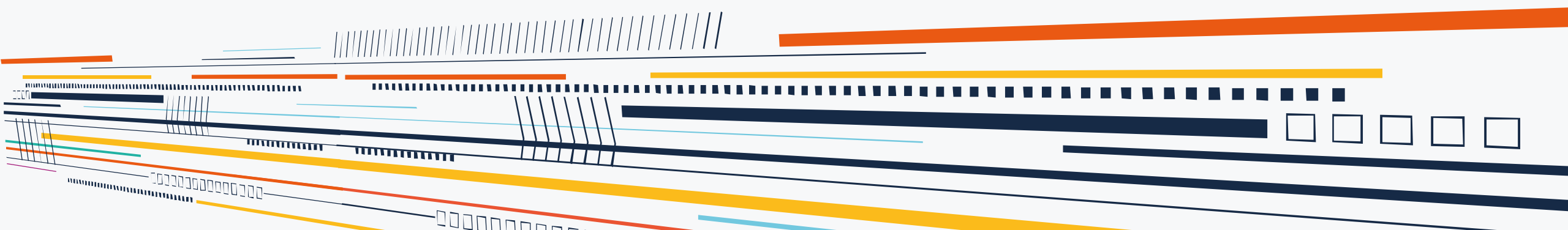
[squaredup.com/topics](https://squaredup.com/topics)





SquaredUp

Coffee Break Webinar Series  
High Availability

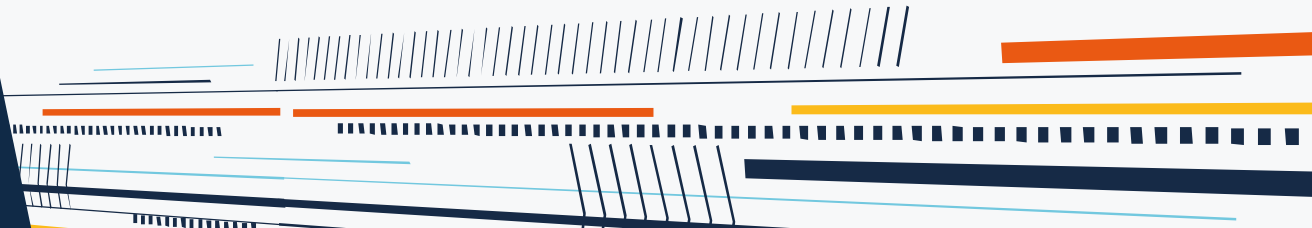


# Topic

## High Availability

Discussion points:

- What is High Availability
- Considerations
- Basic troubleshooting



# What is High Availability

High Availability (HA) is a feature that lets you distribute your Squared Up deployment over **more than one server**

It provides **multiple access points** to Squared Up, which creates redundancy and the opportunity to load-balance client connections

All content and configuration is shared which creates a **consistent user experience** regardless of which server you connect to



# When should I use it

## Redundancy and Load Balancing

### Business Needs

- Critical applications must be highly available in my organisation
- We have multiple locations with distributed infrastructure

### Technical Needs

- We have a high number of *concurrent* Open Access dashboards
- We have a high number of *concurrent* interactive users



# How does it work

Let's start with some key concepts

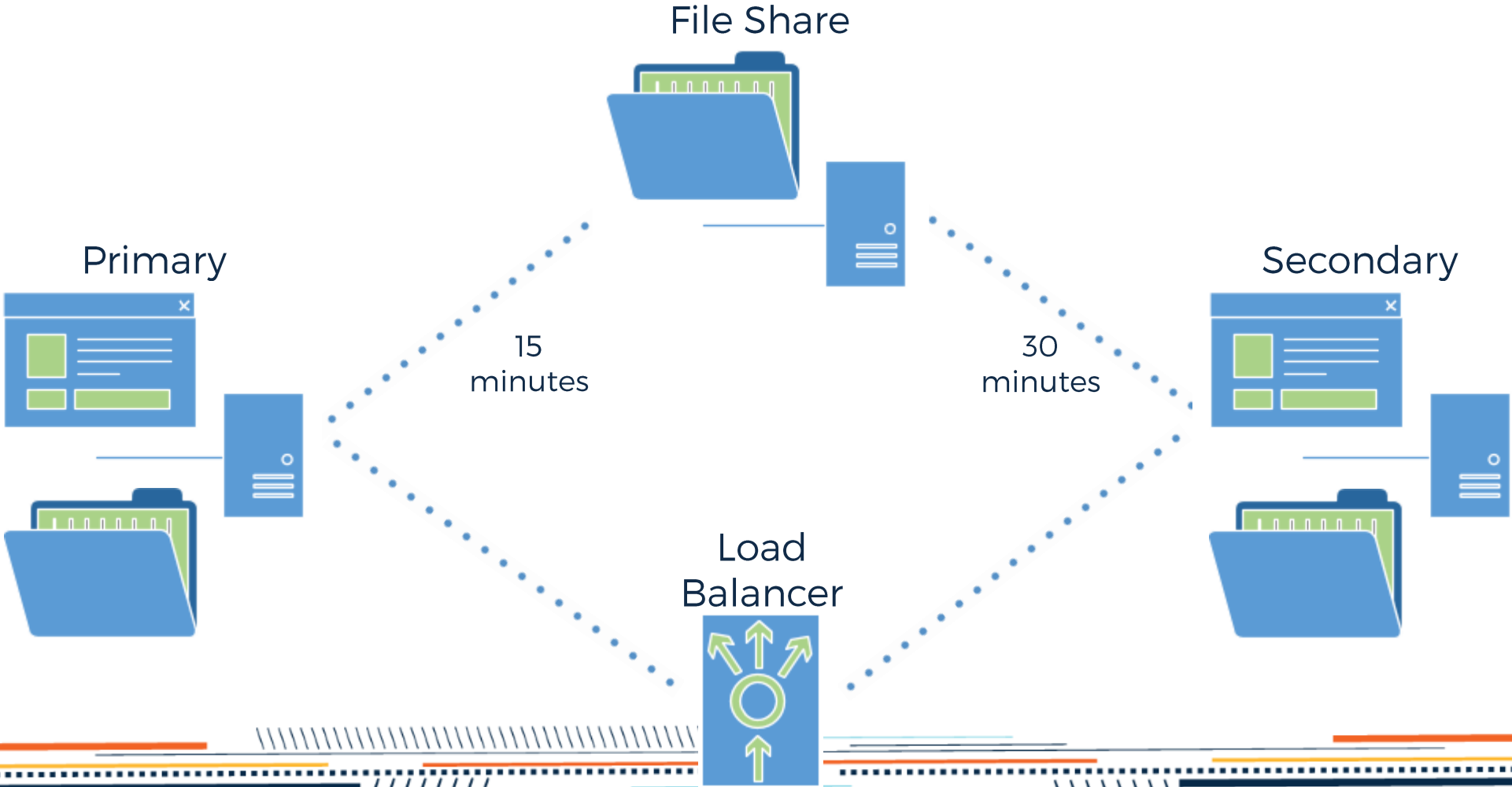
**Primary Server** – this is always the first server you deploy. It's set up with your primary license key. Every Squared Up deployment has one of these

**Secondary Server** – any additional Squared Up servers deployed for HA. Set up with your secondary license key, and there can be more than one

**HA File Share** – a standard Windows file share with some custom permissions. It stores your content and configuration, and HA-specific files

**Heartbeats** – these let your secondary servers know that the primary server is alive and well, and confirm which features your secondary servers can provide

# How does it work



# Considerations

- Is SCOM highly available?
- Is my file storage infrastructure highly available?
- Does Kerberos Constrained Delegation become a factor?
- Do I need instant failover or is my backup\restore SLA sufficient?
- All instances share the same Named user list





# How do you enable it

It's simple, just follow our helpful KB article....

<https://support.squaredup.com>

> Deployment

>> How To Configure High Availability

```
78 .trim(preg_replace('/\\\\\\\\/', '/', $image_src));
79
80 $_SESSION['_CAPTCHA']['config'] = serialize($captcha_config);
return array(
    'code' => $captcha_config['code'],
    'image_src' => $image_src
);

function_exists('hex2rgb') ) {
function hex2rgb($hex_str, $return_string = false, $separator = ',')
    $hex_str = preg_replace("/^[^0-9A-Fa-f]/", '', $hex_str); // Gets
    $rgb_array = array();
    if ( strlen($hex_str) == 6 ) {
        $color_val = hexdec($hex_str);
        $rgb_array['r'] = 0xFF & ($color_val >> 0x10);
        $rgb_array['g'] = 0xFF & ($color_val >> 0x8);
        $rgb_array['b'] = 0xFF & $color_val;
    }
    if ( strlen($hex_str) == 3 ) {
        $rgb_array['r'] = hexdec(str_repeat(substr($hex_str, 0, 1), 2));
        $rgb_array['g'] = hexdec(str_repeat(substr($hex_str, 1, 1), 2));
        $rgb_array['b'] = hexdec(str_repeat(substr($hex_str, 2, 1), 2));
    }
    return_string ? implode($separator, $rgb
```

# Troubleshooting

Some things to check...

- Are your share permissions correct?
- Do newly published dashboards appear on all servers?

If you're happy to go a bit deeper...

- Recycle the application pools
- Check the logs on the primary for
- Check the logs on the secondary for

**Updating HA Heartbeat**

**Verifying Heartbeat**

Get in touch with us at [support@squaredup.com](mailto:support@squaredup.com)

# Coffee Break: Resources

Let us know what you'd like us to cover:

[squaredup.com/topics](https://squaredup.com/topics)

See what's coming up next:

[squaredup.com/coffee-break-series](https://squaredup.com/coffee-break-series)

Recordings and slides published via

[squaredup.com/blog](https://squaredup.com/blog)

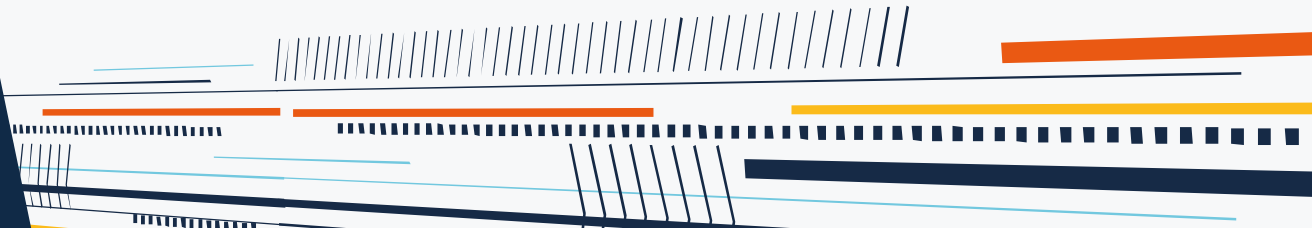
YouTube playlist for series

<https://www.youtube.com/playlist?list=PLJNXoiGgmTEu3yZRGpPNWQbG9WMyihZFs>

Follow up email, inc. resources,  
sent out after each webinar



# Q&A





SquaredUp

