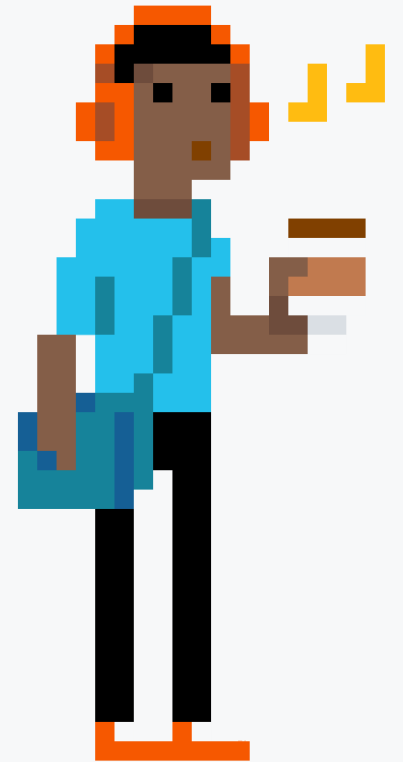


While you wait...

Why not let us know what topics you'd like us to cover next?

Take the short survey at:

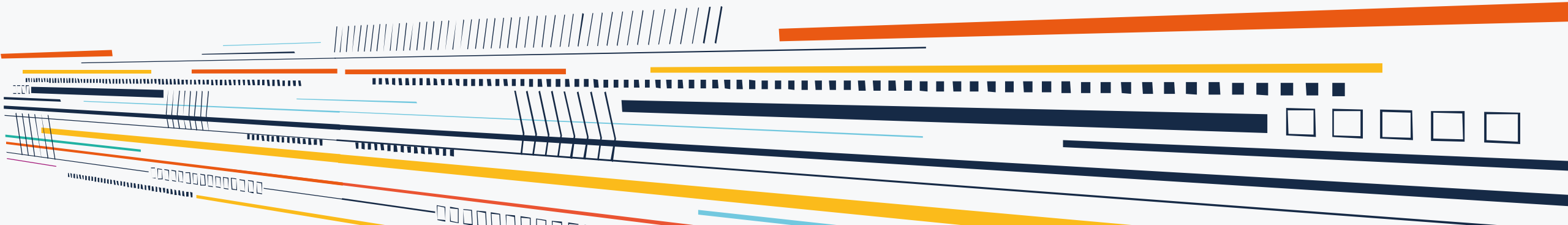
squaredup.com/topics





Coffee Break Webinar Series

OMS Integration



Topic

Integrating OMS query results directly into Squared Up

Discussion points:

- Overview and how it works
- Configure OMS Connection
- OMS futures and 'Kusto'
- 3.2 Sneak peek for **live viewers only**



OMS Integration

Unlock the value of OMS data without lots of headaches:

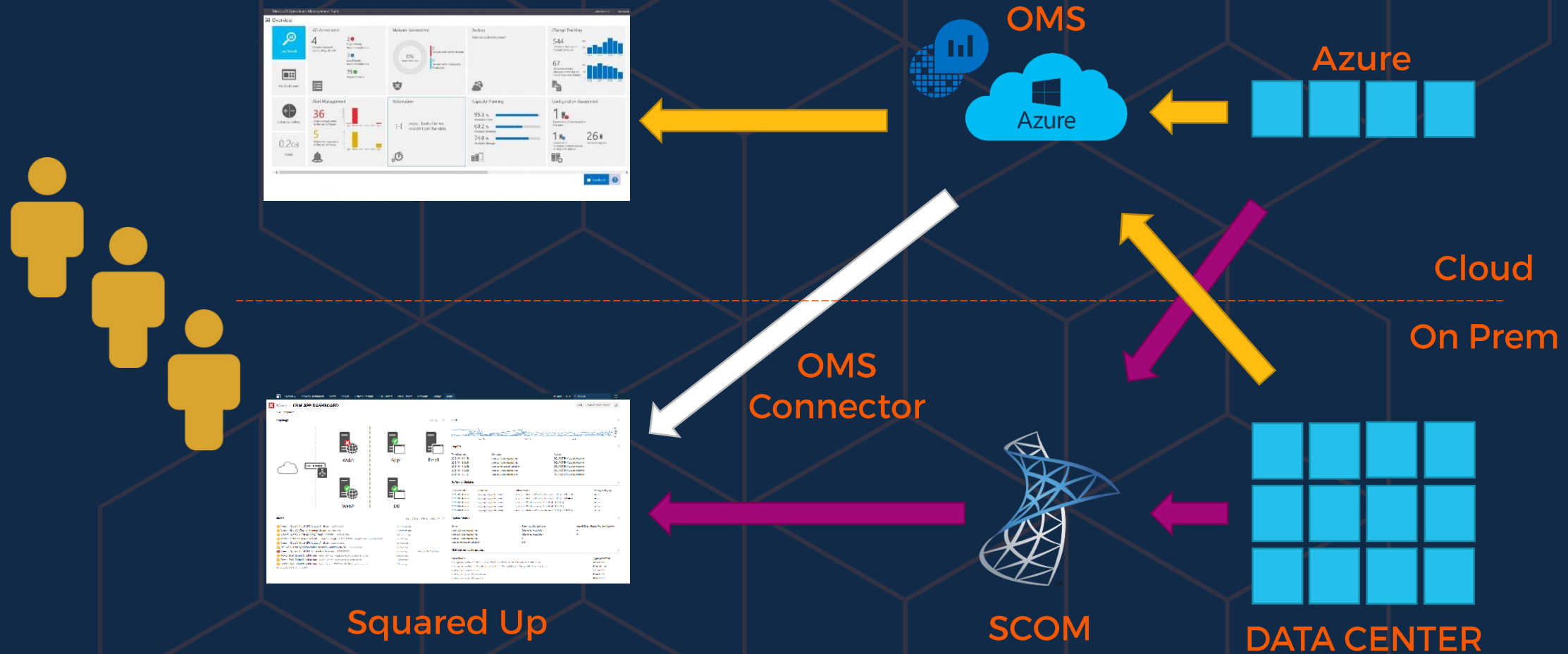
- Queries live OMS data and displays on your dashboard
- Supports all OMS data types (Events, Config Changes..)
- Automatically scope OMS queries to your SCOM objects
- Apply SCOM Role-based access control to your OMS queries
- No need to setup your users in OMS
- Easy to share enterprise-wide

OMS Integration

OMS Integration in Squared Up is a little different to integrating OMS and SCOM

- No existing configuration between OMS and SCOM required
- Works with whatever data you have in OMS, no new agents required
- Results are displayed on demand, so no extra storage

How does it work?



Configure Connector

Connecting to OMS requires a service account and application in Azure

We have created a **PowerShell** script that performs all necessary configuration for you:

- Create a new Application
- Create a new Service Principal
- Assign the SP the Reader role for Operational Insights

The script is available on <https://download.squaredup.com>



Demo

Configure some sample queries showing logons and software updates

The queries used in this session is available online:

<https://docs.squaredup.com/>

```
download_installer"
log "====> This node is using channel #{node['squared_up_channel']}"
log "====> This node is using the package #{node['squared_up_package']}"

directory "c:/squared_up_temp" do
  action :create
end

Chef::Recipe.send(:include, Windows::Helper)
is_a_build_installed = is_package_installed("#{node['squared_up_build_dir']}")

/_block "check-current-build-time" do
  block do
    node.run_state["install_new_build"] = true
    node.run_state["ftp_file_time"] = File.ctime("#{node['squared_up_build_dir']}")
  end

  Chef::Log.info("Last modification time: #{node.run_state['ftp_file_time']}")

  if node.attribute?('squared_up_build_last_mod_time')
    if node.normal['squared_up_build_last_mod_time'] == node.run_state['ftp_file_time']
      node.run_state["install_new_build"] = true
    else
      node.run_state["install_new_build"] = false
    end
  end
end
```

OMS Futures

Microsoft are bringing a new query language to OMS, codenamed 'Kusto'



Coffee Break: Resources

Let us know what you'd like us to cover:
squaredup.com/topics

See what's coming up next:
squaredup.com/coffee-break-series

Recordings and slides published via
squaredup.com/blog

YouTube playlist for series
<https://www.youtube.com/playlist?list=PLJNXoiGgmTEu3yZRGpPNWQbG9WMyihZFs>

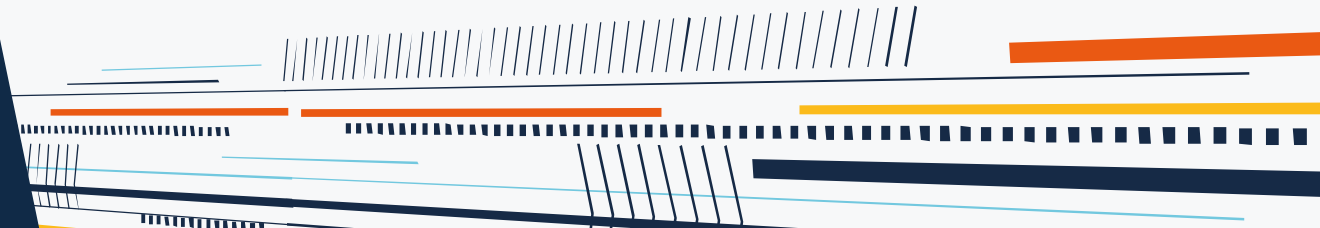
Follow up email, inc. resources,
sent out after each webinar



3.2 Sneak Peek



Q&A





SquaredUp

